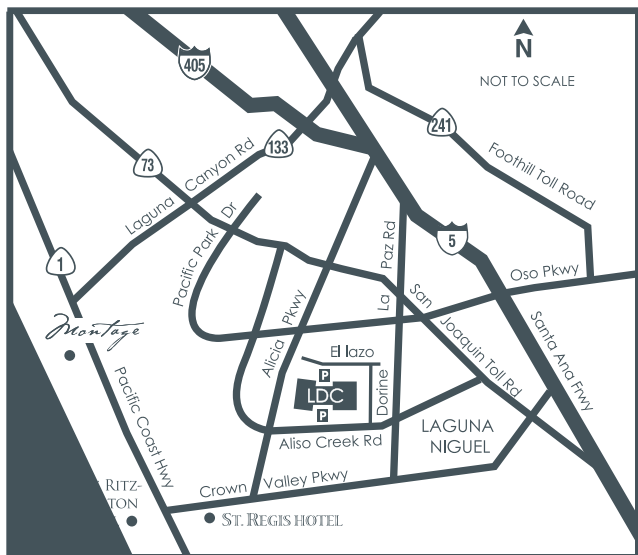


## LAGUNA DESIGN CENTER

23811 Aliso Creek Road, Suite 105  
Laguna Niguel, CA 92677  
(949) 643-2929  
[www.lagunadesigncenter.com](http://www.lagunadesigncenter.com)

PRESORTED STD  
U.S. POSTAGE  
PAID  
Los Angeles, CA  
Permit No. 33

RETURN SERVICE REQUESTED



LAGUNA DESIGN CENTER  
Invites You To Attend

# FALL MARKET 2012

Wednesday, September 19

Register Online @  
[lagunadesigncenter.com/events](http://lagunadesigncenter.com/events)



featuring  
ERIC COHLER  
10 AM  
and  
THOM FILICIA  
2 PM



FABRIC  
Lee Jofa / Eric Cohler Collection



# LDC

## Luxury Lifestyle.

Join Us  
Wednesday, September 19

# FALL MARKET 2012



## ERIC COHLER

*Restoring Edward  
Durrell Stone's 1937  
A. Conger Goodyear  
house: An epic  
journey*



## THOM FILICIA

*From Inspiration to  
Implementation*



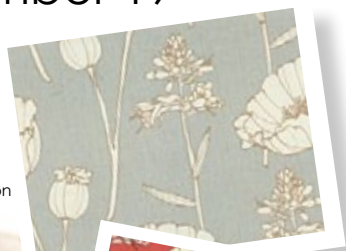
# Please Join Us FALL MARKET 2012

Sponsored by  
**luxe.**  
interiors + design



FABRIC  
Lee Jofa / Eric Cohler  
Collection

Wednesday, September 19  
9:00 AM - 5:00 PM



FABRIC  
Kravet / Thom Filicia Collection



Join us for a day of design, just for designers!  
Featuring keynote presentations by ERIC COHLER and THOM FILICIA and unique showroom events planned throughout the day.

Doors open at 9 AM. Registration Required. Café Neff will be open at 8 AM for coffee and breakfast. Lunch service will begin at 11 AM.

To register for Fall Market, please visit  
[www.lagunadesigncenter.com/events](http://www.lagunadesigncenter.com/events) and for more information please call 949-643-2929.

## Eric Cohler

*Restoring Edward Durrell Stone's 1937 A. Conger Goodyear house: an epic journey.*  
10:00 AM - Center Court



Eric Cohler, one of the nation's leading interior designers, is highly acclaimed for his distinguishing ability to fuse classical and contemporary elements. Dubbed "The Mixmaster" by industry editors, Cohler's interior spaces display layers of unusual texture, color, and verve. Cohler is proud to be included in House Beautiful's annual issue on "America's Top 100 Interior Designers" as well as to have been designated one of the country's fourteen "best of the best."

Join Eric Cohler through a historical journey of the A. Conger Goodyear house through architecture, interior design, and art; as well as, exploring the differences between a "restoration" process and a "renovation" process.

## Thom Filicia

*From Inspiration to Implementation*  
2:00 PM - Center Court



From his start at renowned design firms, including Parish-Hadley, Thom Filicia has launched his acclaimed enterprise, Thom Filicia Inc. and emerged as one of today's most influential and respected interior designers. His clients range from Tina Fey, Jennifer Lopez and Peter Jennings, to those in the worlds of finance, sports and hospitality. Gaining fame on the Emmy-winning *Queer Eye*, *Style Network* and *HGTV*, he is a best-selling author and has been praised as a "Top 100 Designer" by House Beautiful and an "A-list" designer by Elle Decor. He is also the driving force behind Thom Filicia Home Collection. Filicia's newest publication, *American Beauty: Renovating and Redecorating a Beloved Retreat* will be available in-stores on November 13, 2012.

For more information visit [www.ThomFilicia.com](http://www.ThomFilicia.com).

## Cocktail Reception

4:00 PM B&C Select, Suite 155

Sponsored by

**luxe.**  
interiors + design



B & C Select invites you to their new and expanded showroom for a delectable cocktail reception! Join us from 4 PM to 6 PM and enjoy cocktails and light fare while you see the exciting new showroom!

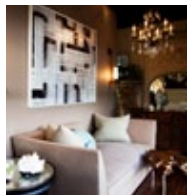
# Market Schedule



**KEYNOTE SPEAKER**  
**10:00 AM - Center Court**  
**Eric Cohler**  
Sponsored by Lee Jofa

*Restoring Edward Durrell Stone's 1937  
A. Conger Goodyear house: an epic journey.*

LEE JOFA invites you directly following Eric Cohler's Keynote Presentation for a reception in the Kravet/Lee Jofa Showroom/Brunschwig & Fils, Suite 156.



**11:00 AM**  
**Gina B, Suite 130**

Gina B invites you for a meet and greet with two local artists NICOLE LANDAU and BEN HECHT from the WILLIAM MERRILL GALLERY.



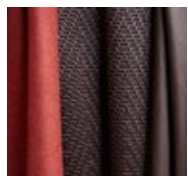
**11:00 AM**  
**Westervelt's, Suite 120**

WESTERVELTS invites you to their new ART STUDIO to meet California local artists BIRGITTA KAPPE and STEVE KELL and watch them create original paintings throughout the day.



**11:30 AM**  
**Roomscapes, Suite 139**

Roomscapes invites you to an INTERACTIVE FASHION SHOW featuring models wearing creative outfits to match 8 different cabinetry vignettes. Vote for your favorite vignette and model to get entered into a drawing for a fun gift basket...also featuring a fashion boutique!



**11:30 AM - 12:30 PM**  
**Schumacher, Suite 126**

*Collection Preview & Light Lunch Reception*

Visit our showroom for an exclusive presentation of the Schumacher 2012 Fall collection, featuring Luxe Lodge. A refined and rustic, yet thoroughly modern approach for a sophisticated getaway environment, from mountain hearthside to woodland retreat. Discover the plush mohair blends with wool blanket plaids, kilim-inspired patterns, velvet houndstooth and stitched leather fabrics that create this richly textured collection of weaves, embroideries and wallcoverings. Following the presentation, join us for light refreshments.



**12:00 PM**  
**Witford, Suite 165**

WITFORD invites you to come see the new and exciting ERIC BRAND "MOBIL MATERIALS BAR." The 18' ERIC BRAND trailer has been transformed into a swanky and functional traveling showroom with various monitors displaying details of complex projects and a vast array of materials sourced worldwide.



**12:30 PM - 1:30 PM**  
**Fremarc, Suite 132**  
**Designing with Feng Shui:**  
*Presented by Jennifer Bonetto*

An Introduction to the Eight Mansion system and how to use this system to determine if furniture placement, bathrooms, kitchens, bedrooms, doors, and so forth are ideally located/placed for money, relationships, health and stability--how to fix this if it's not ideally located/placed. Also, special considerations for bedrooms and offices and interior negative forms in a home that can affect health, money and relationships.



**1:30 PM**  
**Jonathan Franc, Suite 160**  
*How to Sell More Custom and Look Great Doing It!*

JONATHAN FRANC invites you to an informative and fun presentation on custom creation. Be it built-in media centers, bathroom vanities, or your own furniture designs, this presentation will help you to dazzle your clients and increase their perceived value of your design expertise. Leave the presentation armed with the tools you need to take your interior design to a higher level. Champagne and Hors D'Oeuvres.



**KEYNOTE SPEAKER**  
**2:00 PM - Center Court**  
**Thom Filicia**  
Sponsored by Kravet

*From Inspiration to Implementation*

KRAVET invites you directly following Thom Filicia's Keynote Presentation for refreshments in the Kravet/Lee Jofa/Brunschwig & Fils Showroom, Suite 156.



**3:00 PM**  
**Blake House, Suite 171**

Join us as REBECCA WELCH, Director of Product Development, introduces the new line of Natural Wallcoverings from HARTMANN & FORBES. Learn more about the sustainable natural materials she chose, the process used to handcraft each roll and the inspiration behind each of the nine series in the Americana Collection. Light refreshments will be served.

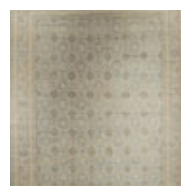


**4:00 PM**  
**Cocktail Reception**  
**B & C Select, Suite 155**

B & C SELECT invites you to wind down after a day of design with a delectable cocktail reception in their new and expanded showroom!

Sponsored by  
**luxe.**  
interiors + design

## Throughout The Day



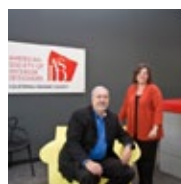
**Aga John, Suite 121**

AGA JOHN invites you to come and see our new arrival of fine handmade rugs from Afghanistan and Pakistan, top design and color in market. Refreshments served.



**Ann Sacks, Suite 162**

Come see the new HAVELI collection by NEISHA CROSLAND. This collection is inspired by Native American weavings, handmade and painted in Italy. Light Refreshments.



**ASID/Orange County Chapter, Suite 108**  
Please stop by the ASID office for an Open House. Light Desserts.



**Austin Horn, Suite 113**

Austin Horn is introducing two new FALL Bedding Collections, LEAF collection and the WONDERLAND collection. Make sure to stop in and see these beautiful customizable collections. Light Refreshments.

# Throughout The Day



## **Bassman Blaine, Suite 114**

Come see what is new at the Bassman Blaine showroom featuring on-trend furnishings from ARTERIORS HOME, NOIR, LEFTBANK ART and many more exciting lines, where everything is available from the floor. Enjoy a cappuccino while you see the latest Fall Collections.

## **Bau Showroom, Suite 134**

Newest Additions! CLASSIC LEATHER COLLECTION Now Arrived! Recliners, chairs, sectionals, barstools & a full leather line! Plus, pillow, tassels, & bling collections for the Fall. Refreshments, Wine & Cheese.



## **Birch Hill Interiors, Suite 140**

Add grace to your home décor with the elegant and beautiful collections at BIRCH HILL INTERIORS. Light Refreshments.



## **Brown Jordan, Suite 176**

Preview the latest collections and see the new FUSION Collection. Learn how to bring outdoor living to the next level. Light refreshments.



## **California Style, Suite 111**

Introducing new NAUTICA HOME line of upholstery and case goods. Come see CALIFORNIA STYLE'S new art and accessories for all your design needs. Everything available off the floor! Light refreshments.



## **Century, Suite 114**

Join Century as they introduce the new Century Icon Collection by CHARLOTTE MOSS. Light Refreshments.



## **De Benedictis, Suite 168**

Visit DE BENEDICTIS and see their fresh and chic new lines. Don't forget to take a peek upstairs. Light Refreshments.

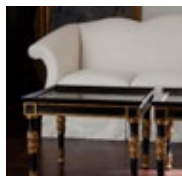
## **Design Studio International, Suite 161**

Stop in the new showroom offering an eclectic style of furniture, accessories, art and lighting. See the new Fall Collections from BOLIER & CO and ALLAN COPLEY! Light refreshments.



## **Ebanista, Suite 127**

Stop in the showroom to see the beautiful and sophisticated fall collection of handmade furniture available. Light Refreshments.



## **Elizabeth Benefield, Suite 170**

Meet LAURY BARNES, Showroom Owner and Fabric Designer of Elizabeth Benefield. See Laury's latest Fall Collection and beautiful new product. Light refreshments.

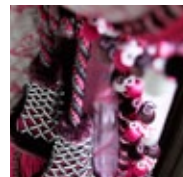


## **Exquisite Surfaces, Suite 174**

Exquisite Surfaces introduces 2 new product lines; SITIO TILES and SIGNET WOOD collections! Stop by for a glass of wine and French brie to see our new Sitio Tiles and Bauhaus Boards.

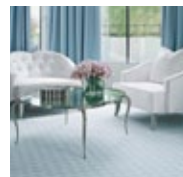
## **Harsey & Harsey, Suite 175**

The showroom is updated for Fall with new furniture lines never before seen in Laguna Niguel. Come see the new lines from SHERRILL FURNITURE, PRECEDENT and SCION a new fabric line from HARLEQUIN. Visit the showroom throughout the day to see the newly updated showroom.



## **Interiors Fine Flooring, Suite 150**

Visit the newly expanded showroom to see INTERIOR'S multiple lines of fine flooring available! Light refreshments and Champagne.

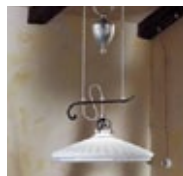


## **Isabella Morgan, Suite 124**

Come see the new ISABELLA MORGAN SHOWROOM showcasing the new ISABELLA MORGAN HOME upholstery line. Light Refreshments!

## **Island Bay, Suite 137**

Join ISLAND BAY for a Fall celebration! See their newest collections from SUMMER CLASSICS and GLOSTER. Light refreshments.



## **Lighting Innovation, Suite 115**

There is always something new at LIGHTING INNOVATION! Lighting Innovation introduces many new Fall Collections. Make sure to ask about their lighting consultation service.



## **Montage, Suite 132**

Montage will be featuring the DESIGN EXPRESS COLLECTION from HIGHLAND HOUSE. Select upholstery styles are available in over 300 fabrics for delivery in 30 days. No extra charge for fringe and welting on toss pillows. Don't miss out on this fabulous collection, just in time for the holidays. FREE FREIGHT for orders placed at FALL MARKET.

## **Pure Fine Furniture, Suite 117**

Come see the exciting new showroom PURE FINE FURNITURE manufacturer of custom furniture and accessories for both the residential and hospitality industry. Light Refreshments.

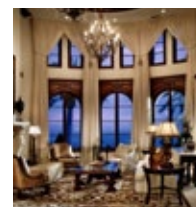


## **Roomscapes, Suite 139**

Make sure to stop by the showroom throughout the day for the INTERACTIVE FASHION SHOW, drawings, and fashion boutique. Light refreshments.

## **Window Visions, Suite 141**

Stop in WINDOW VISIONS-THE LOEWEN WINDOW CENTER OF ORANGE COUNTY! Allow Loewen to show you the possibilities available for your design needs. Light refreshments.



## New Lines | New Products

### *Baker*

#### Suite 177 <

Internationally renowned designer, THOMAS PHEASANT, explores new expressions using simplicity, bold silhouettes and clean finishes in his newest collection for BAKER. Pheasant's 10th anniversary and fourth collection with Baker are inspired by classic ideals and modern luxury.



### *Montage*

#### Suite 132 <

Beyond its gracious aura of refinement, it is the details found in the new collection EUROPEAN COTTAGE from STANLEY FURNITURE that ultimately give it distinction.

## BLAKE HOUSE

#### Suite 171 >

HARTMANN & FORBES, award-winning maker of natural window coverings of sustainable materials, is launching its first full line of Natural Wallcoverings. The AMERICANA COLLECTION features 46 designs made from sustainably cultivated and rapidly renewable materials.



## ANN SACKS

#### Suite 162 ^

ANN SACKS proudly introduces the OGASSIAN COLLECTION. Daniel Ogassian, artist and designer, features bold and geometric forms displayed in rich finishes and artisan glazes. With vivid shapes and grand scale, these tiles are ideal for large, inspired installations.



# New Lines | New Products



## Suite 175 ▾

PERENNIALS introduces exclusive outdoor collections designed by celebrated interior designer, ROSE TARLOW. Bringing her unique aesthetic outdoors. The new Rose Tarlow Melrose House for Perennials collection consisting of more than 70 different fabrics compliments Perennials' classic direction, featuring soft colors, antique hues and timeless textures. ❶

Drawing inspiration from global influences and combining popular design trends with dynamic color schemes, FABRICUT introduces its latest print collection – FLORAL EXPRESSIONS all with a hand painted feel. ❷

This season VERVAIN brings a little bit of dainty and delicacy with its new HANAMI COLLECTION. Pattern Hanami, named after the traditional Japanese custom of enjoying the beauty of flowers, simplifies the beautiful flower blossom and replicates a traditional Japanese floral stencil. ❸



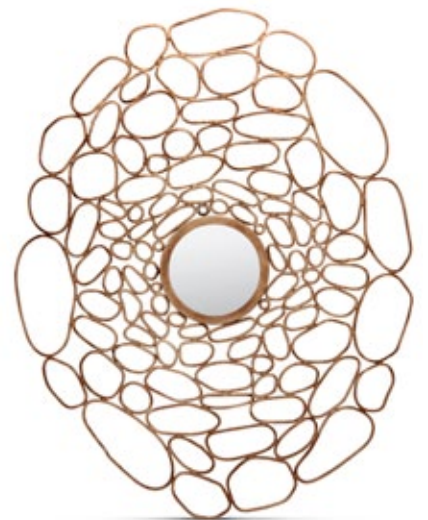
## Suite 114 ▲

ARTERIORS HOME introduces the new FELICE IRON BENCH with a natural linen seat and black iron frame and vintage brass accents.

## WITFORD

### Suite 165 >

Introducing the new line MADE GOODS! Every piece in the collection is hand-crafted by traditional artisans from around the world, using time consuming handwork.



## BIRCH HILL INTERIORS

### Suite 140 ▲

BIRCH HILL INTERIORS introduces the new MURANO sofa from MARGE CARSON. With a selection of over 550 fabrics and leathers, 50 decorative finishes and an extensive variety of trims and embellishments from which to choose, the final product is always as uniquely personal.



## Suite 120 ^

BIRGITTA KAPPE'S paintings are bold with color. From the cocoa and rusty browns of date palms in an Indian Canyon oasis, to the vibrant cloistered gardens of California's missions. Introducing MISSION MORNING and AT THE DOCK.

# New Lines | New Products

## Bau Showroom

### Suite >

Introducing the new CLASSIC LEATHER FURNITURE line. The oldest manufacturer of leather-upholstered furniture in the United States. With nearly 200 leather choices and 300 frame options, they are dedicated to crafting the finest leather seating made in the industry.



### Suite 156 v

CANDICE OLSON, star of HGTV's Divine Design and Candice Tells All, has introduced a new collection of decorative fabrics for KRAVET. The collection offers precious silks, bold chenilles, dreamy sheers, rich textural bouclé, glazed linens and soft, rich cottons.



### Suite 130 >

PERRY LUXE COLLECTION is sculpted steel furniture made from hand-cut, hand-formed plate steel that is hand-welded into tables, beds, headboards, and fireplace-surrounds. All products are proudly made in the USA.



### Suite 111 v

New line NAUTICA HOME FURNISHINGS is inspired and energized by the spirit of water. The NORTH SHORE collection exudes a contemporary, casual lifestyle. The mid tone stain combined with the refined, tactile details creates a tailored design for any room.



## Island Bay

### Suite 137 ^ >

ISLAND BAY introduces the new MARINA COLLECTION from SUMMER CLASSICS. The Marina collection invokes images of afternoon boat tours and lakeside sunsets with a mahogany finish frame featuring decorative rope accents.



# New Lines | New Products



**ROOM  
SCAPES**  
kitchen • bath • home

## Suite 139 >

WOOD-MODE'S latest addition to the European Inspirations Design Group is the GRAMERCY PARK Lifestyle Design. A combination of door styles, finishes, and high-end appliances all contribute to this kitchen's unique appeal.



## Lighting Innovation

### Suite 115 <

There are many new and exciting things happening at Lighting Innovation. Over 200 lines of lighting available! We have many custom capabilities; if you can dream it, you can have it! Contact one of our lighting specialists today.



EXQUISITE  SURFACES

## Suite 174

EXQUISITE SURFACES' introduces the new SIGNET COLLECTION. The Signet Collection is made from salvaged antique distressed French oak which is tinted and stained – color options being Indigo, Sand and Army.



  
**DESIGN STUDIO**  
International

## Suite 161 ^ >

Introducing the TAVOLA FURNITURE COLLECTION from OGETTI. Tavola, meaning "table" in Italian, is known today for the use of these natural materials, such as shells, coconut and even rope. Discover a new world of design for your home decor with the Tavola collection.



**CENTURY®**

## Suite 144 >

Century Furniture announces the launch of their partnership with interior design talent, CHARLOTTE MOSS, as the second Century Icon. Ms. Moss has collaborated with Century to produce a range of pieces based off the designs and vision she is renowned for in the interior design world.



## New Lines | New Products

### LEE JOFA

#### Suite 156 <

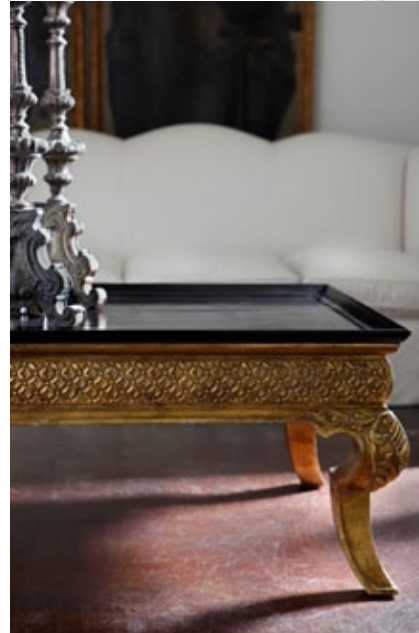
In her second collaboration with GROUNDWORKS, KELLY WEARSTLER has created a vibrant and inspiring fabric collection that combines her love for natural materials, graphic patterns and unique colors.



### EBANISTA®

#### Suite 127 <

The PALAZZO Cocktail Table by EBANISTA has an intricate frette detail apron and antiqued 23K yellow gold finish with an antiqued painted black top. For more information on this piece or others in our cocktail table collection, please visit our showroom



### JONATHAN FRANC

#### Suite 160 ^

The ZOEY CABINET shown in a sleek high-gloss black lacquer finish with satin brass details - now available for viewing at the Jonathan Franc showroom.

### SCHUMACHER.

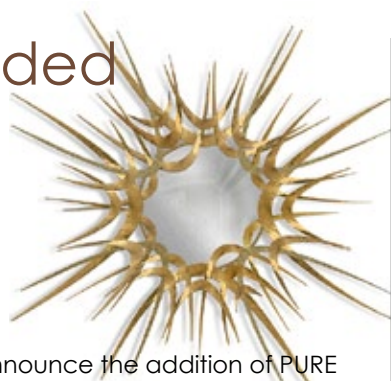
#### Suite 126 >

Rustic yet refined, LUXE LODGE brings a modern spirit to the rural retreat. This layered collection of fabrics, embroideries and wallcoverings perfectly balances a rough-hewn sensibility with an urbane aesthetic for a truly luxurious and serene environment.



## New and Expanded Showrooms

**pure**  
fine furniture



### Suite 117 v >

Laguna Design Center is pleased to announce the addition of PURE FINE FURNITURE - Manufacturer of custom furniture and accessories for both the residential and hospitality industry. Pure offers a full range of styles and designs from classic, transitional, to mid-century modern and contemporary. Select from PURE'S catalog of over 300 one-of-a-kind pieces or create your very own! Pure offers a one stop shop for all your design and project needs with unbeatable price and services.



*B&C*  
Select

### Suite 155 ^ >



B & C Select is proud to announce the opening of their new and expanded showroom, Suite 155 located by the Orange Flag Entrance. Their new space will have a more modern, light and bright feel featuring expanded presentations of Dornbracht, Axor, and Cheryl Wagner. The showroom will also have working shower heads and kitchen faucets on display, and they will be the only retailer in Orange County to carry the new Dornbracht ATT (Ambiance Tuning Technique) Unit.

## PROVASI COLLECTION

### Suite 143 v



Get Social &  
Start Pinning!



Follow Us  
on *Pinterest*  
Have Fun!

Stay current on the latest LDC news and updates. Organize and share things you love.

# Tickets On Sale Now! 6th Annual Designer Runway

Thursday, September 13, 2012  
5:00 PM - 10:00 PM  
Cocktails, Wine and Cuisine

CO-HOST  
THE COLTON COMPANY

CO-HOST  
luxé.  
interiors + design

BENEFITING  
PHILHARMONIC SOCIETY  
COMMITTEES



## Order you tickets today!

General admission - \$100

Online: \$100 + \$4 Processing Fee

Order your tickets online @

[www.lagunadesigncenter.com/events](http://www.lagunadesigncenter.com/events) or call 949.643.2929

**YOU ARE INVITED!** Join us as teams of OC's top interior designers create fashion forward outfits out of fabric and trim from LDC Showrooms in 90 minutes. Watch as designers strut down the runway and are rated by celebrity judges. Enjoy an evening of culinary tastings paired with wine and cocktails.



A Fall Fashion Preview will be presented by SUE WONG as the prelude to the main event.

Hosted by celebrity designer and star of YouTube's most popular design show REBECCA ROBESON and celebrity judges; MICHAEL BERMAN, KELLY PERSELLIN, NANCY CORZINE, and SUE WONG.

### EVENT SPONSORS



### SHOWROOM & FABRIC SPONSORS



## 2012 - 2013 Event Calendar

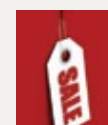


**September 13**  
**DESIGNER RUNWAY**  
Public

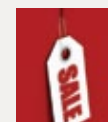


**September 19**  
**LAGUNA DESIGN CENTER'S  
FALL MARKET**

Featuring  
**Eric Cohler**  
**Thom Filicia**  
Trade Only



**October 11**  
**FALL SAMPLE SALE**  
**DESIGNER PREVIEW DAY**  
Trade



**October 12-13**  
**FALL SAMPLE SALE**  
Public

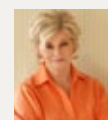


**February TBD**  
**ASID OCC Student Career Day**  
Students



**March 19**  
**LAGUNA DESIGN CENTER'S  
SPRING MARKET**

Featuring  
**Barbara Barry**  
**Charlotte Moss**  
Trade Only



## 2012 Directory



Pick up the Laguna Design Center 2012 Directory at the new Visitor Center, Suite 105 or at any of your favorite showrooms.



## Café Neff Suite 122

Don't forget that Café Neff offers catering in addition to their daily cafe! This charming and innovative café is open for patio dining in the beautiful LDC gardens Monday through Friday. Breakfast is served from 8AM to 11AM and Lunch is served from 11AM to 3PM. Coffee, cappuccino, scones and handmade desserts are available from 8AM to 4PM. For all your Café Neff catering inquiries, please contact the catering office at (949) 831-9464.