

# Feng Shui That Rocks the House

## *The Eight Mansions System*

### MODULE 11

1



# Module 11: Subjects Discussed

2

## Analyzing floor plans

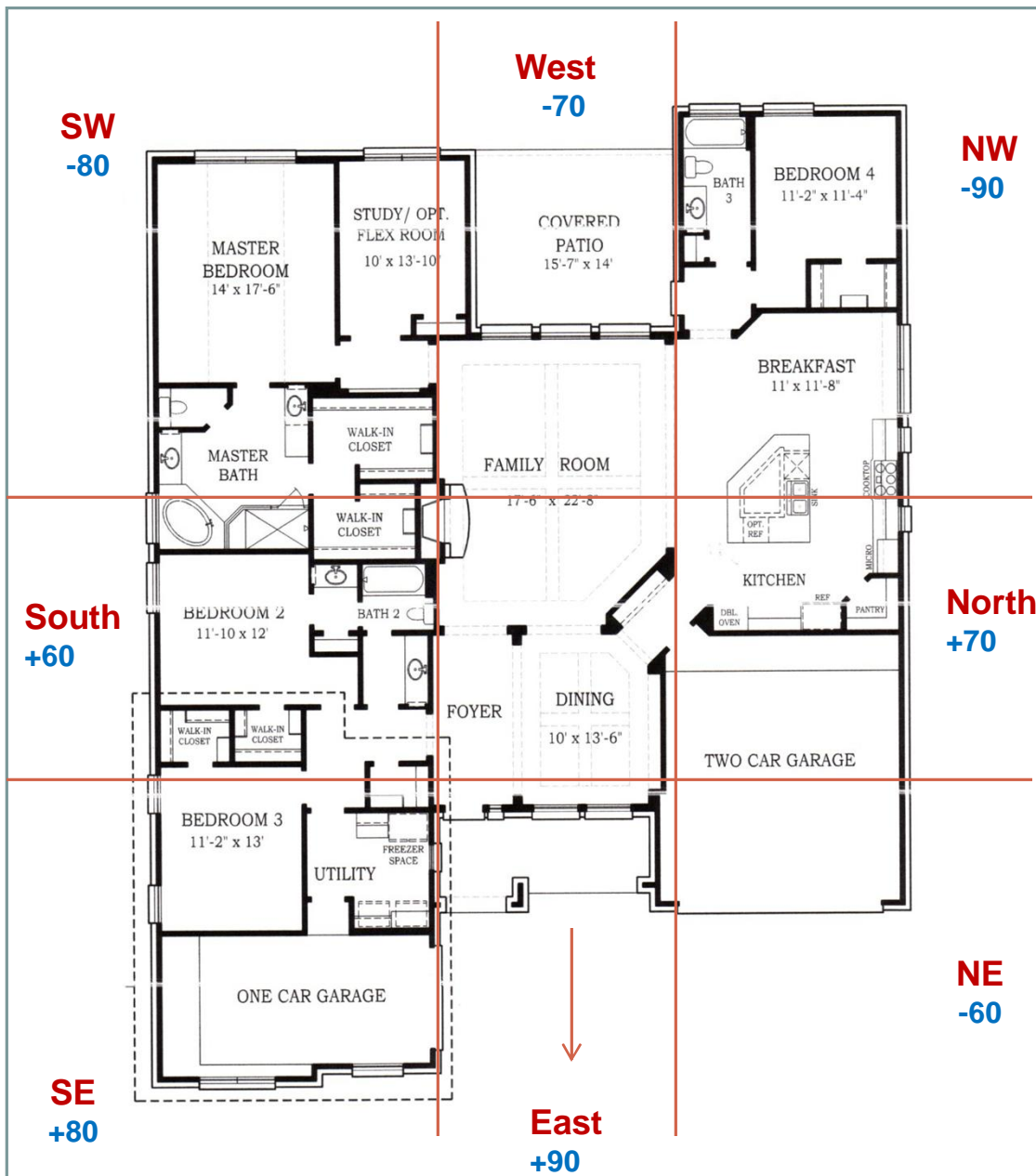
- Exercise #1 (House)
- Exercise #2 (Apartment)
- Exercise #3 (House)
- Exercise #4 (Apartment)



# Module 11: Exercise #1 (House)

3

- **House faces East 2; male born 4-12-1982**
- **This single man just bought the house and is expanding his business. He wants more money and a wife.**
- Find the correct *Life Gua Number*, divide the house into 9 squares/sectors, place the eight directions, and overlay the Eight Mansions codes (+90, -80, +70 etc).
- Place this information just outside the floor plan and the corresponding direction.
- Next, analyze the current placements and then make recommendations of bed, stove, doors, and so forth.



- **House Faces East 2 9 Life Gua**
- The main door is his +90
- The interior garage door faces NE, his -60
- The kitchen is located Northwest and North
- The stove is located on his +70 (relationships)
- The knobs face South (+60)
- The master bedroom and bathroom are in his -80 (SW)
- Back door is facing his -70 (West)
- The natural placement for the master bed is likely the South wall.

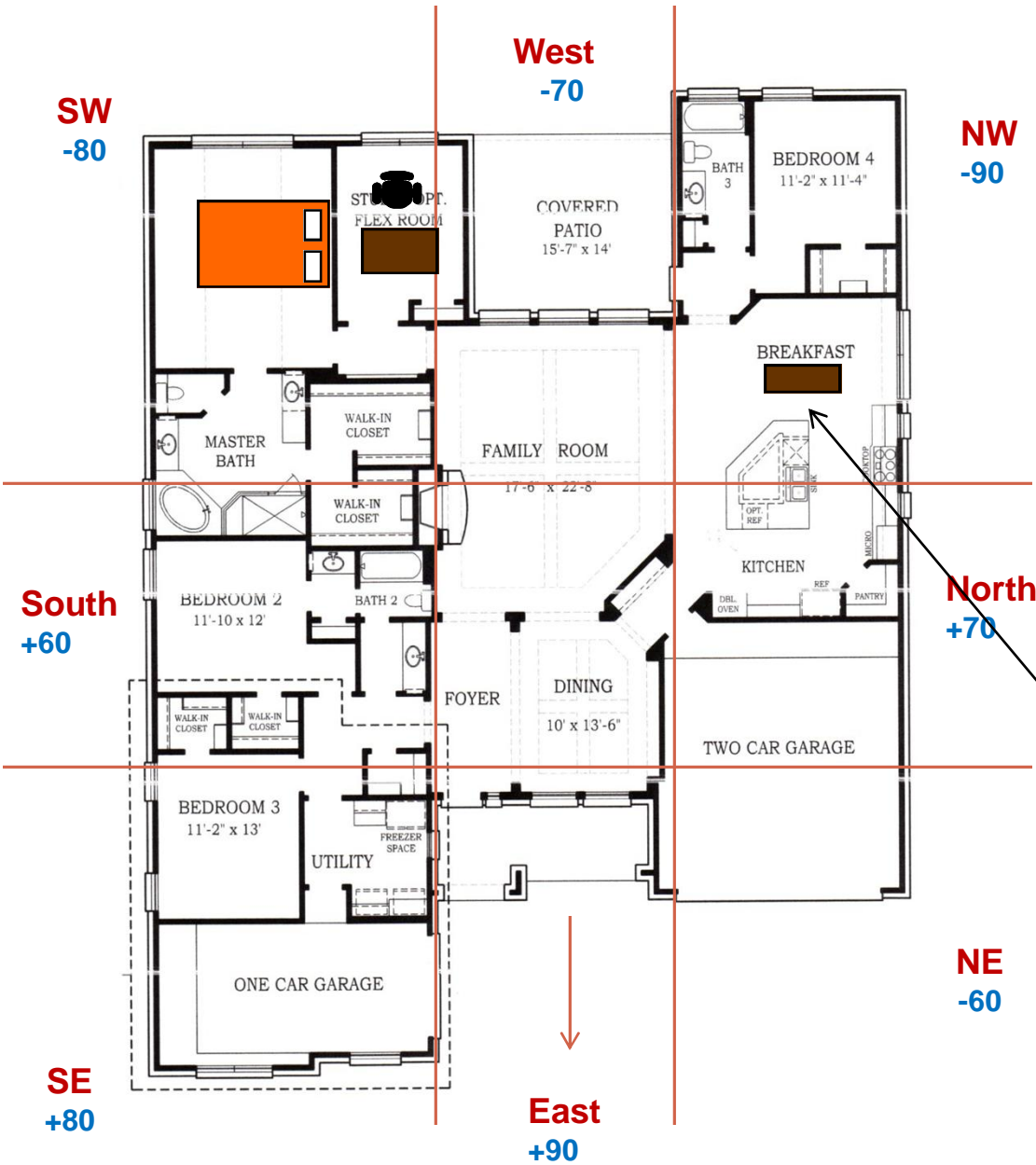
# Module 11: Feng Shui Recommendations

5

- He should use the front door (East-facing) more than the interior garage door. The front door could be used 80-90% of the time. This will enhance money-luck.
- The bed in the master bedroom should be placed on his +70 since he wants a wife.
- The desk in his office should face East (+90) since he wants more wealth.
- There is no counter space in the West of the kitchen (-70). If he cooks, a portable stove should be placed on a mobile island in the West. The 'stove' knobs should be facing East. Move it out of the way when not in use.
- The 2-burner stove will burn up his -70 and activate good relationships. The knobs facing East will enhance money.
- See the next slide.







*Exercise #1 with the recommendations in place*

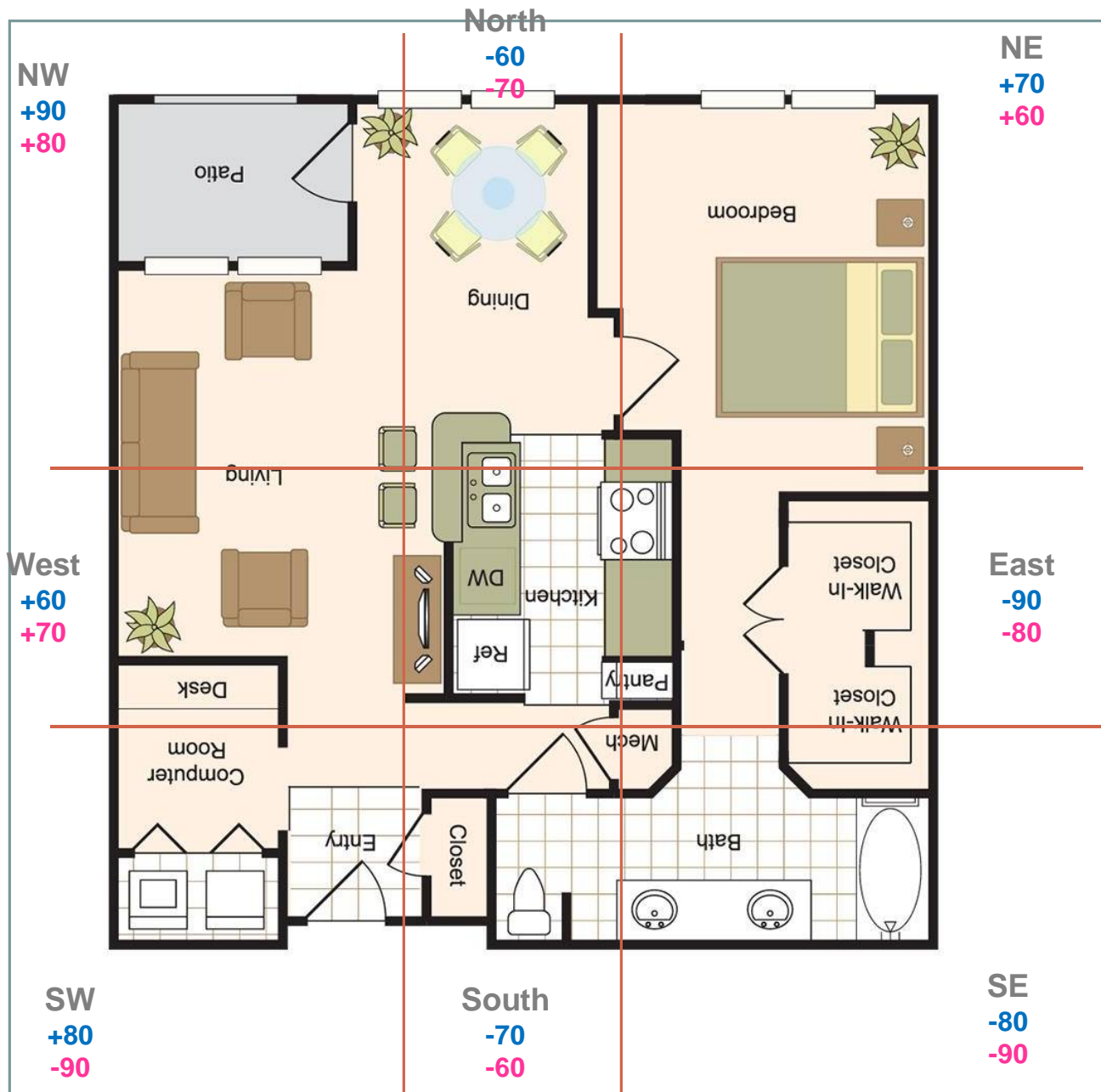


*Sit the portable stove on the West counter facing knobs to the East.*

# Module 11: Exercise #2 (Apartment)

7

- Apartment entrance is South 3
- **Wife** born 6-26-1984
- **Husband** born 3-3-1984
- They want to enhance money to buy a house. They also just started a small 'farm to table' restaurant business.
- Find the correct *Life Gua Number*, divide the house into 9 squares/sectors, place the eight directions, and overlay the Eight Mansions codes (+90, -80, +70 etc).
- Place this information just outside the floor plan and the corresponding direction.
- Next, analyze the current placements and then make recommendations of bed, stove, doors, and so forth.



- **House Faces South 3**  
**7 Life Gua, 8 Life Gua**
- The main door is his +60 in Advanced Eight Mansions, and her +70.
- The kitchen is located in the center and is not ideal
- The stove is located on his East (-90 and -80)
- The knobs face West (+60 and +70)
- The master bedroom is located in the Northeast
- The master bathroom is located in the SE and South
- The bed is on the East wall which is his +80 and her +90 (advanced 8M)
- The patio door faces West
- There is a home office space (computer room)



# Module 11: Feng Shui Analysis

9

- The couple enter from the South. In Advanced Eight Mansions (AEM), South 3 is good.
- The stove sits on the East (a minus for them both) and burns up bad luck. A stove that burns up a -90 or -80 will enhance wealth.
- The knobs face West; an excellent direction for them both.
- The bed, while good in AEM, it is more powerfully placed angled to the Northwest. This will increase the money luck they need.
- The bathroom/toilet is located in a negative sector for them both (SE and South) and this too will increase money, health and relationships.
- While in the computer room/office neither should face North. They should angle their chairs to face NW to increase the wealth luck.



NW  
+90  
+80

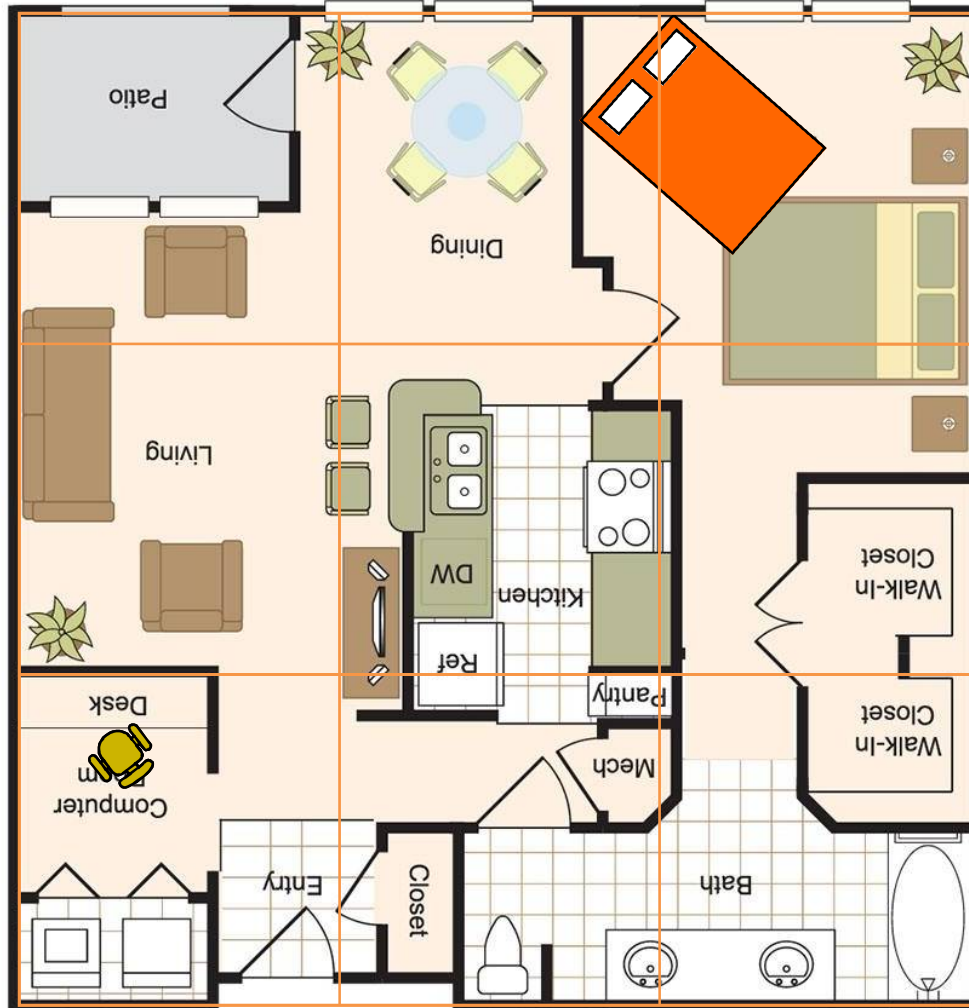
North  
-60  
-70

NE  
+70  
+60

*Exercise #2 with  
the recommendations  
in place*

West  
+60  
+70

East  
-90  
-80



SW  
+80  
-90

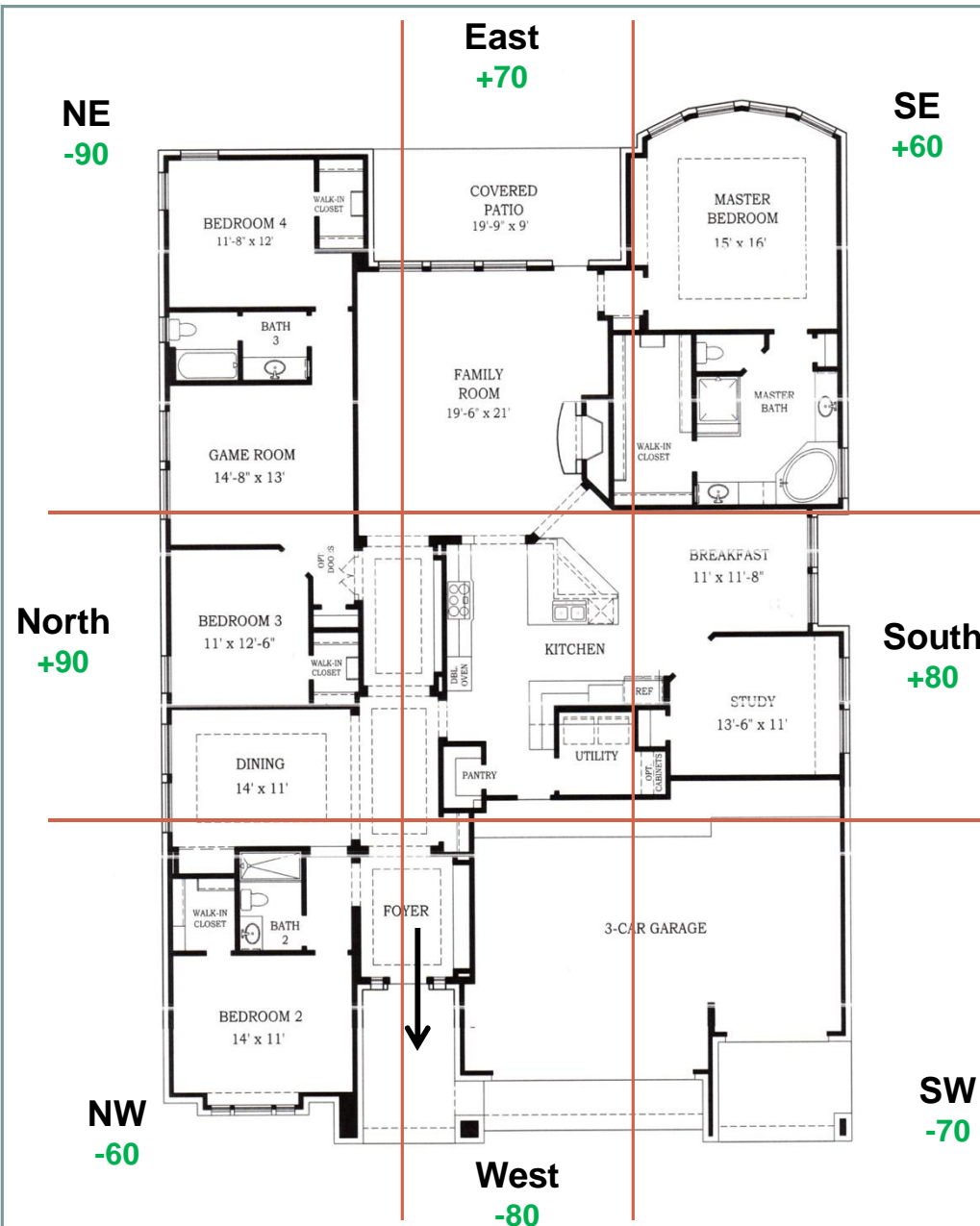
South  
-70  
-60

SE  
-80  
-90

# Module 11: Exercise #3 (House)

11

- **House faces West 1, female born 6-12-1998**
- **She works from home (website designer) and wants to find a husband and more clients**
- Find the correct *Life Gua Number*, divide the house into 9 squares/sectors, place the eight directions, and overlay the Eight Mansions codes (+90, -80, +70 etc).
- Place this information just outside the floor plan and the corresponding direction.
- Next, analyze the current placements and then make recommendations of bed, stove, doors, and so forth.



- **House Faces West 1 4 Life Gua**
- The main door is her +70 in Advanced Eight Mansions
- The interior garage is the same direction (West 1)
- The stove sits on her +90 and will harm money luck
- The bed can be placed well on the East wall or the South wall
- The master bedroom is located in her +60
- The master bathroom is located in her +60
- The back door is East (+70)
- She can use *Bedroom 2* or *Bedroom 4* for her office and face North or South

# Module 11: Feng Shui Analysis

13

- The doors to enter are good in AEM
- The back door is excellent and activates good relationships. This feature will assist her in attracting a husband.
- The stove sitting on her +90 (North) is a problem for money luck. If she uses it daily, it will need to be relocated to sit on the West and face East.
- Since she wants a partner in life, the bed is best placed on the East wall. She should have solid headboard since there is a set of windows.
- She should set up her office to face the North for the best wealth luck. If she prefers privacy she can use Bedroom 4 or if she likes to see out the front Bedroom 2.

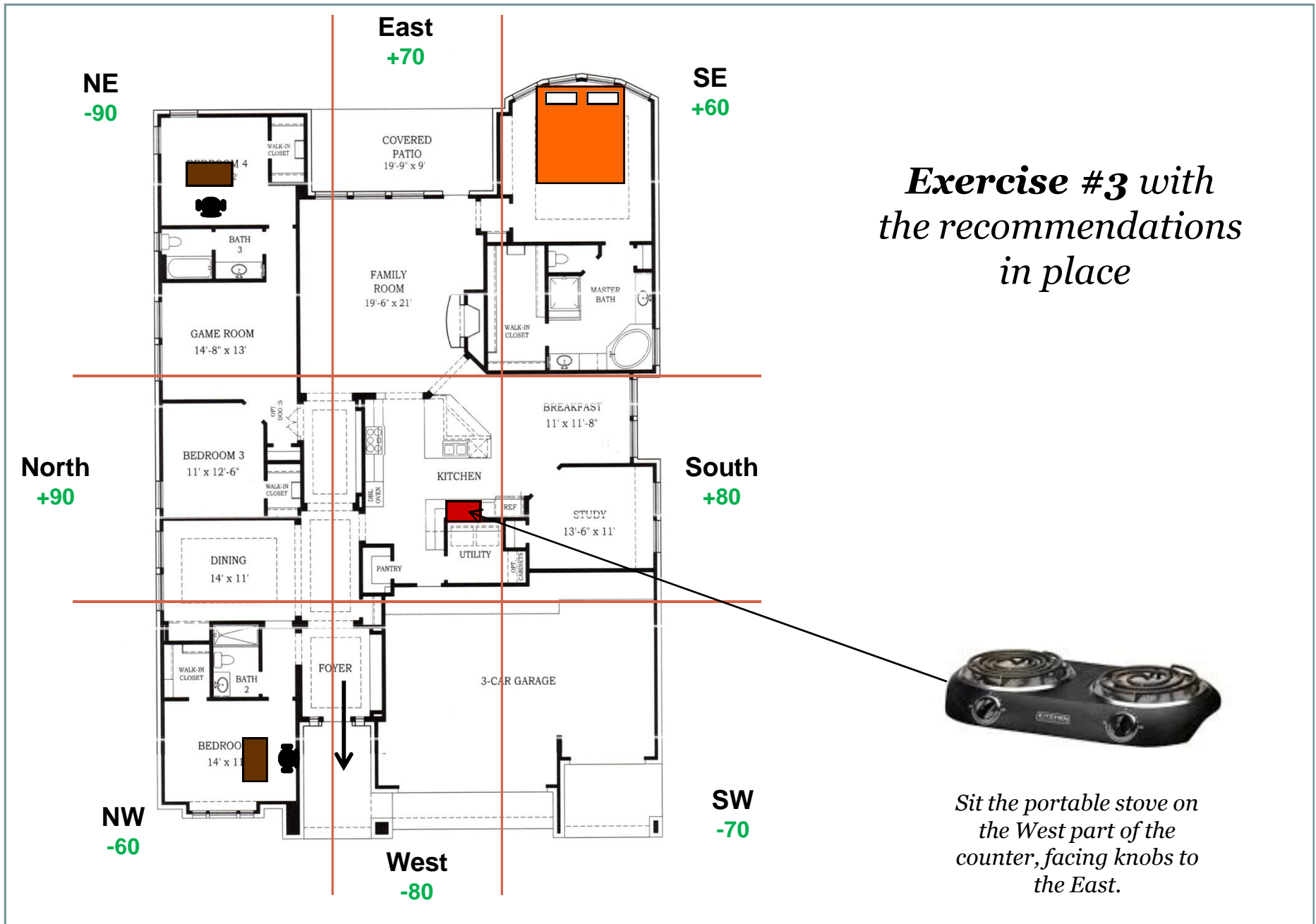




*Exercise #3 with  
the recommendations  
in place*



*Sit the portable stove on  
the West part of the  
counter, facing knobs to  
the East.*



# Module 11: Exercise #4 (Apartment)

15

- **Apartment faces Northwest 3, male born 6-12-1994**
- **He is an attorney and wants to make partner in the firm**
- Find the correct *Life Gua Number*, divide the house into 9 squares/sectors, place the eight directions, and overlay the Eight Mansions codes (+90, -80, +70 etc).
- Place this information just outside the floor plan and the corresponding direction.
- Next, analyze the current placements and then make recommendations of bed, stove, doors, and so forth.

- **House Faces NW 3  
6 Life Gua**

- The main door is his +60
- The stove sits on his +70 and will harm relationships
- The bed can be placed well on the Southwest of Northeast wall
- The master bedroom is located in his +80
- The master bathroom is located in his -80
- The balcony door is Northeast (+80)
- He could make the guest room his home office



# Module 11: Feng Shui Analysis

17

- The entrance to the apartment is his +60 and this supports stable energy
- The stove sits on his +70 and will suppress good relationships and hurt his ability to make partner in his firm
- A portable stove will need to be located next to the sink. It will then sit SE and face West. He can move it when not cooking.
- While the bed can be placed on either the SW or NE wall, the Northeast will give him a more powerful result
- When working in his home office, he should face Southwest (+70) to bring good relationship luck. This will help counter the bad placement of the stove and guest bathroom.



East  
-70

SE  
-60

South  
-90

NE  
+80

SW  
+70

North  
-80

NW  
+60

West  
+90



*Exercise #4 with  
the recommendations  
in place*



*Sit the portable stove on  
the Southeast counter  
facing knobs to the West.*



**THE END**  
**Module Eleven of**  
*Feng Shui That Rocks the House*



This document was created with the Win2PDF "print to PDF" printer available at <http://www.win2pdf.com>

This version of Win2PDF 10 is for evaluation and non-commercial use only.

This page will not be added after purchasing Win2PDF.

<http://www.win2pdf.com/purchase/>