

Feng Shui That Rocks the House

The Eight Mansions System

MODULE 13 (Bonus #1)

1



Module 13: Subjects Discussed

2

- The Celestial Animals
- Center of the House Taboos + Negative Formations
- The Four-Point Gold Principle
- Sha Chi & Poison Arrows



The Celestial Animals



Turtle & Snake

White Tiger

Dragon

Red Bird

Module 13: The Celestial Animals

4

- Gently sloping landforms, rolling hills, and undulating contours are considered excellent Feng Shui. Land that is too steep, completely flat, or severe in any way is regarded as unbalanced and void of vibrant, life-giving energy.
- Extreme, high, or jagged mountain ranges do not emit benevolent chi either. Not everyone is fortunate enough to find the perfect landforms, so it is often necessary to simulate them. And that's where celestial animals come into play.
- To the Chinese, Feng Shui is strongly connected to the celestial animals, namely the **Green Dragon**, the **White Tiger**, the **Black Turtle**, and the **Red Phoenix**. The celestial animals symbolize important, key *land formations* that should immediately surround your home site. This is especially important when examining landforms for luck value.



Module 13: The Celestial Animals

5

- Identifying the needed celestial animals land forms in relation to your house or business is easy. As you look out your front door, the left-hand side is known as the Green Dragon; the right-hand side is called White Tiger.



- The Black Turtle (aka Dark Warrior) resides at the back of your property, while the Red Phoenix (or Vermillion Bird) occupies the front edge of your property. The open space beneath your legs is called *Ming Tang*, or bright hall: this is where chi collects near your main entrance.

Module 13: The Celestial Animals

6

These are the placements as you are looking out the front door (with your back to the door).



The Black Turtle

This is the BACK of the property and must be represented. When there is significant walls, fencing, mountains, hills or another home behind your site, it indicates protection. This also allows the chi/energy to accumulate. Where energy can accumulate, people can thrive!



The Green Dragon

This is the LEFT-HAND side of the property as you are looking out the front door. The Green Dragon represents male energy and the *man of the house*. If it is not represented with a hill, higher ground, or another house, the male may not be “present” or available & be bullied at work. For a business not to have the male side represented could mean failure. Yang energy is necessary for success.



The White Tiger

This is the RIGHT-HAND side of the property as you are looking out the front door. The White Tiger represents female energy and the *woman of the house*. This side, when represented, supports lawyers, judges, politician and people holding high positions of authority. If this side is missing or has a road, it is known as an *aggressive tiger*. The bottom photo is missing the White Tiger.



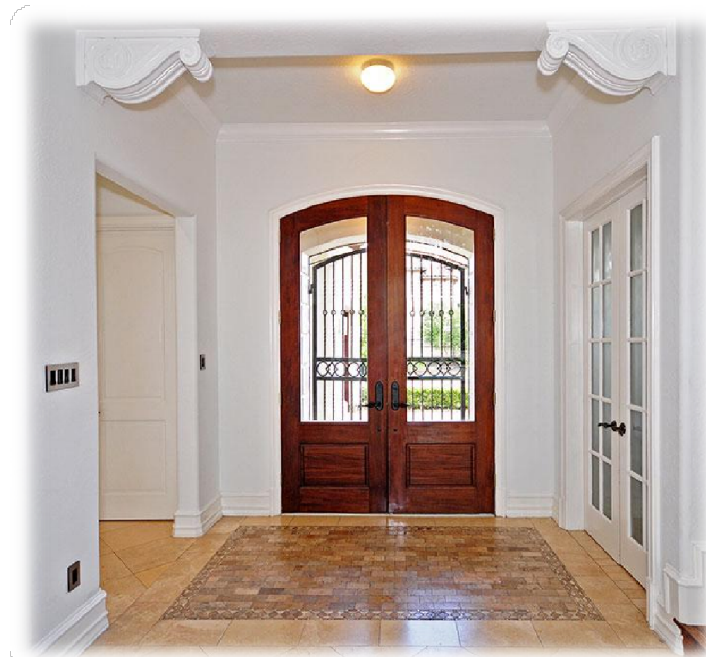
The Red Phoenix *(Bird)*

This is the FRONT of the property represented by a ‘footstool’ or something to capture the energy from going into the street. This helps the energy accumulate on the site. Both of these photos have good representation for a Red Bird which collects the chi before going in the road.



The Ming Tang

This is an open space near the front door where energy can accumulate. There should be an open space inside and out. Photos 1 and 4 indicate a good *external* Ming Tang; photo 2 is a bad *internal* Ming Tang. Photo 3 indicates a good *internal* Ming Tang.



Center of the House Taboos + Negative Formations



Negative Landforms (*difficult to thrive*)

13

- **Main or front doors** that do not face the road—hard to achieve wealth and great career
- Homes **too close to a huge mountain** or built directly on top of a mountain—career & health issues especially with the bones
- Homes with an **extreme drop-off** in the backyard—money loss & corporate take-over
- **Homes located badly**—near graveyards, police stations, excavation sites, etc—creates lethargy, depression, aggressive behavior, bad health
- Homes very close to a **major highway**—people behaving badly, money loss, too much energy



Negative Landforms (*difficult to thrive*)

14



- **Split-level homes** with two to five levels (not a traditional two-story home)—the family is separated, thinking is confused and life in general is disjointed
- **Water features** located incorrectly for the home—money loss, unjust payouts to IRS, bad divorces and bankruptcy
- Homes with **too many roads** surrounding them—unsafe, vulnerable to the world, confusion, money going away quickly
- **Extreme slopes** in the landforms—money loss

Center of the House Taboos

No Fire

Fireplace, Stove or Kitchen

No Water

Toilet, fountain, or laundry room

No Mountain

Staircase or floor-to-ceiling fireplace

These situations will affect **HEALTH** in the following ways:

- **Fire:** *high blood pressure and heart attacks*
- **Water:** *affects blood-related diseases and kidney problems*
- **Mountain:** *affects bone structure/skeleton, joints and back*

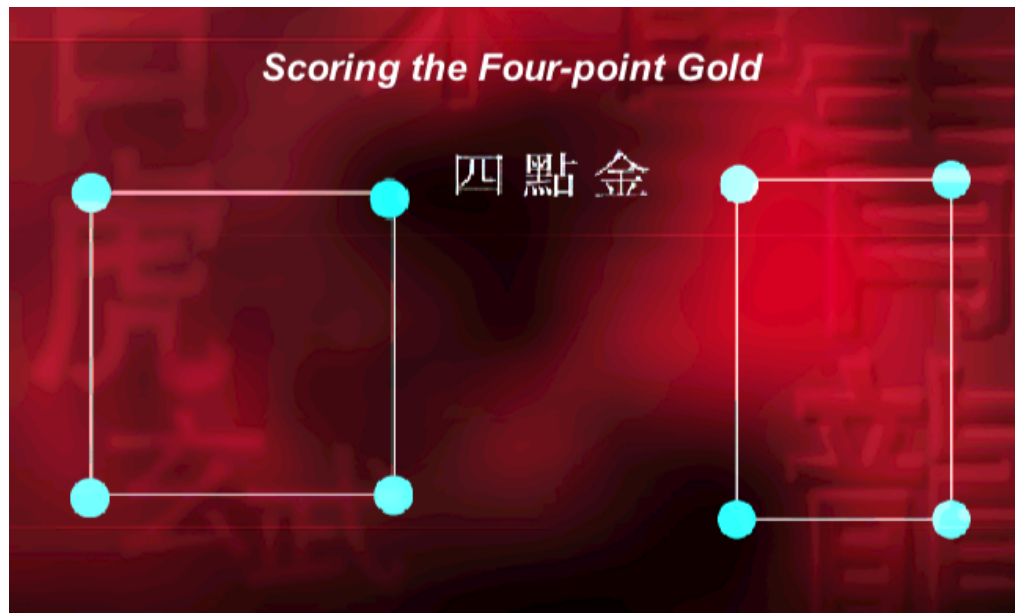


The Four-Point Gold Principle



The Four-Point Gold Principle

Four Point Gold is a home that has the general shape of a square or rectangular shape—they are good because CHI is distributed evenly throughout the space. Very narrow shaped homes will cause debt and money loss. Homes with huge missing sectors are not good



Sha Chi & Poison Arrows



Module 13: Sha Chi & Poison Arrows

19

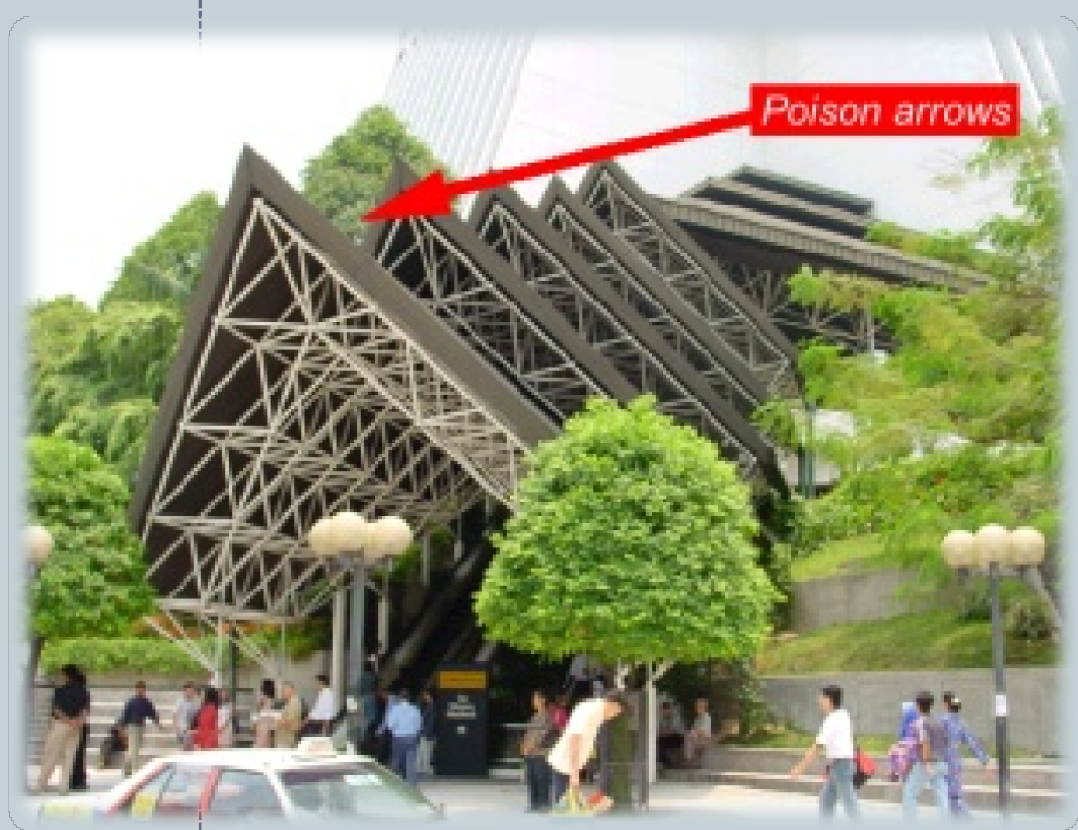


Two previous owners have gone **bankrupt** in this home designed by a Houston architect. It was purchased by someone in 2010 with good luck. The couple tore this structure down and they are building a traditional style home typical to the West University area of Houston. The canon was placed to face the house by a neighbor.

Module 13: Sha Chi & Poison Arrows

20

The May Bank in K.L., Malaysia: The sharp, sword-looking points will affect anything in view AND the bank itself in a negative way. The sword-like sculpture in a Scottsdale office park is also very negative energy.



Module 13: Sha Chi & Poison Arrows

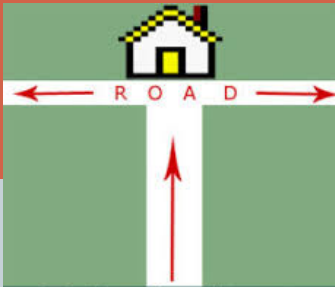
21

Electrical towers can cause cancer if you live close. This water tower is too close to this average sized home, it may indicate illness or money-loss.



Module 13: Sha Chi & Poison Arrows

22



Bad Roads: T-Junctures



Module 13: Sha Chi & Poison Arrows

23



A Classic T-Juncture

Trees obstructing the front door

A mountain/hill blocking the front door

THE END
Module Thirteen of
Feng Shui That Rocks the House



This document was created with the Win2PDF "print to PDF" printer available at <http://www.win2pdf.com>

This version of Win2PDF 10 is for evaluation and non-commercial use only.

This page will not be added after purchasing Win2PDF.

<http://www.win2pdf.com/purchase/>