

Feng Shui That Rocks the House

The Eight Mansions System

MODULE 4

1



Module 4: Compass Direction + Floor Plan

2

- How to Take a Compass Direction
- The Eight Directions
- Dividing the Floor Plan
- Practice Dividing Up Floor Plans



How to Take a Compass Direction



Using a Hiking Compass (Magnetic)

4

- **Face the front door**
- Hold your compass at waist level
- Remove of all jewelry on hands and wrists
- Remove metal belt buckles
- Stand at least 4-6 feet from the front door if it is metal
- Take at least 3 readings



Module 4: Using a Smartphone

5

- **Put your back to the door or face the street**
- Hold the phone at waist level
- Smartphone's have no magnet; they are based on GPS
- **Remain still** as they will change the reading
- Take at least 3 readings

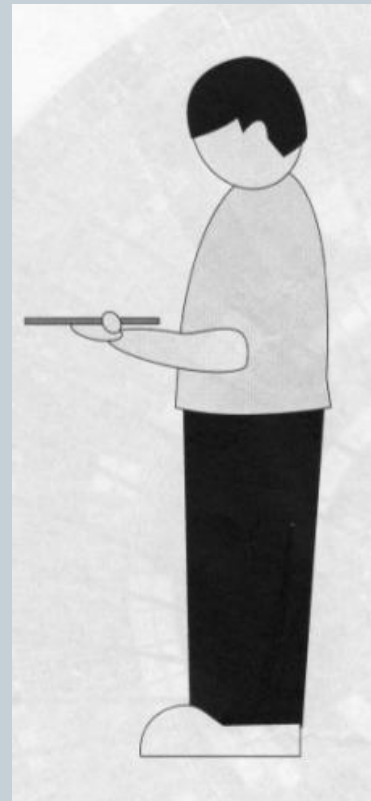


Module 4: Using a Chinese Luo Pan

6

Keep the Luo Pan at waist level and place it at the center and directly on the door, as you face it. If the door is metal or has a great deal of metal on it, step back at least 4-6 feet to get an accurate direction. If the door does not face the road, stand in the center of the front yard/garden and determine the facing degree.

Line the head of the needle between the two red dots. Your compass reading will be at '6:00' o'clock.



The Eight Directions



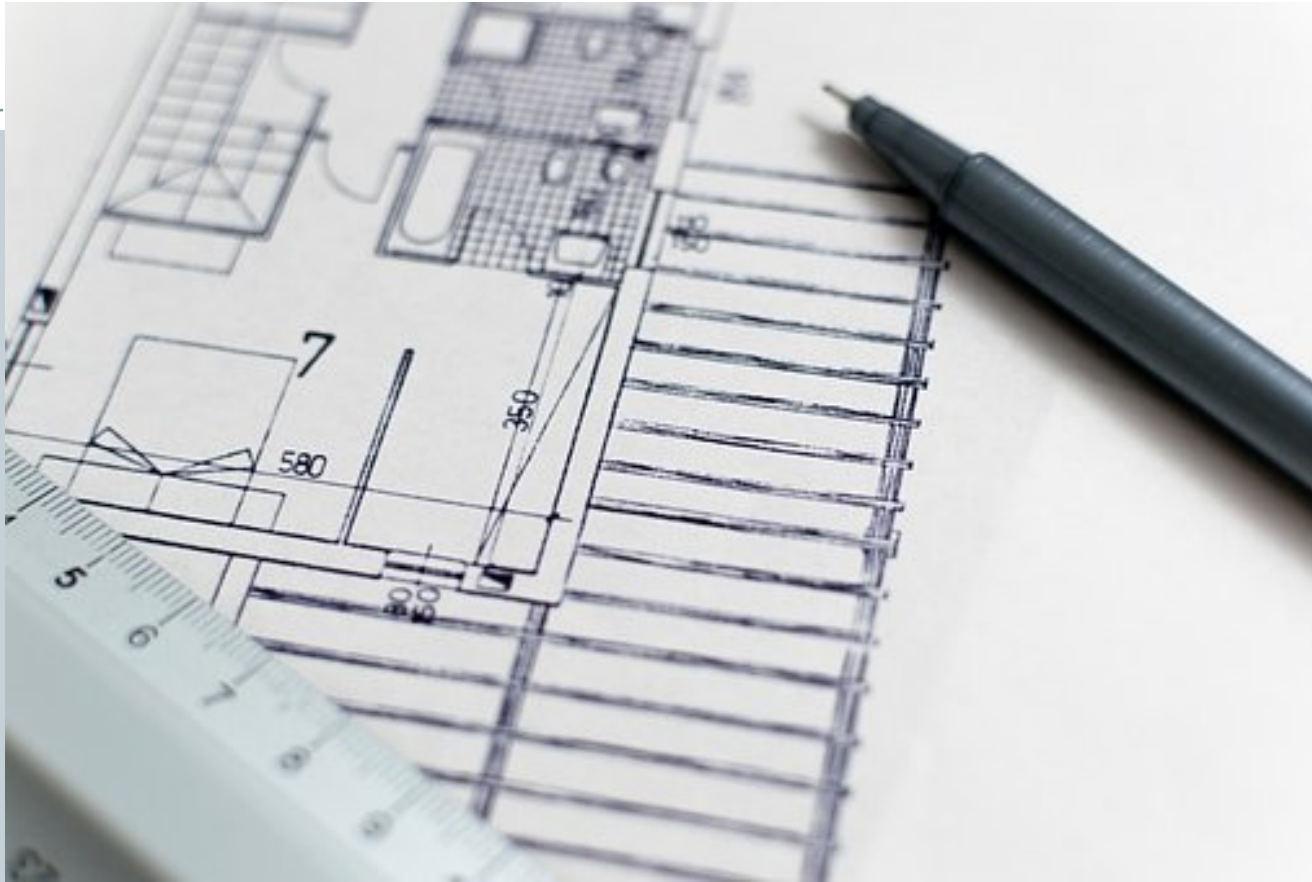
Module 4: The Eight Directions

8

Use the following information to determine the facing direction of a home. For example, if your compass reads 92 degrees, your home faces the East direction. In a future module you will learn the famous 24 different possible facing directions.

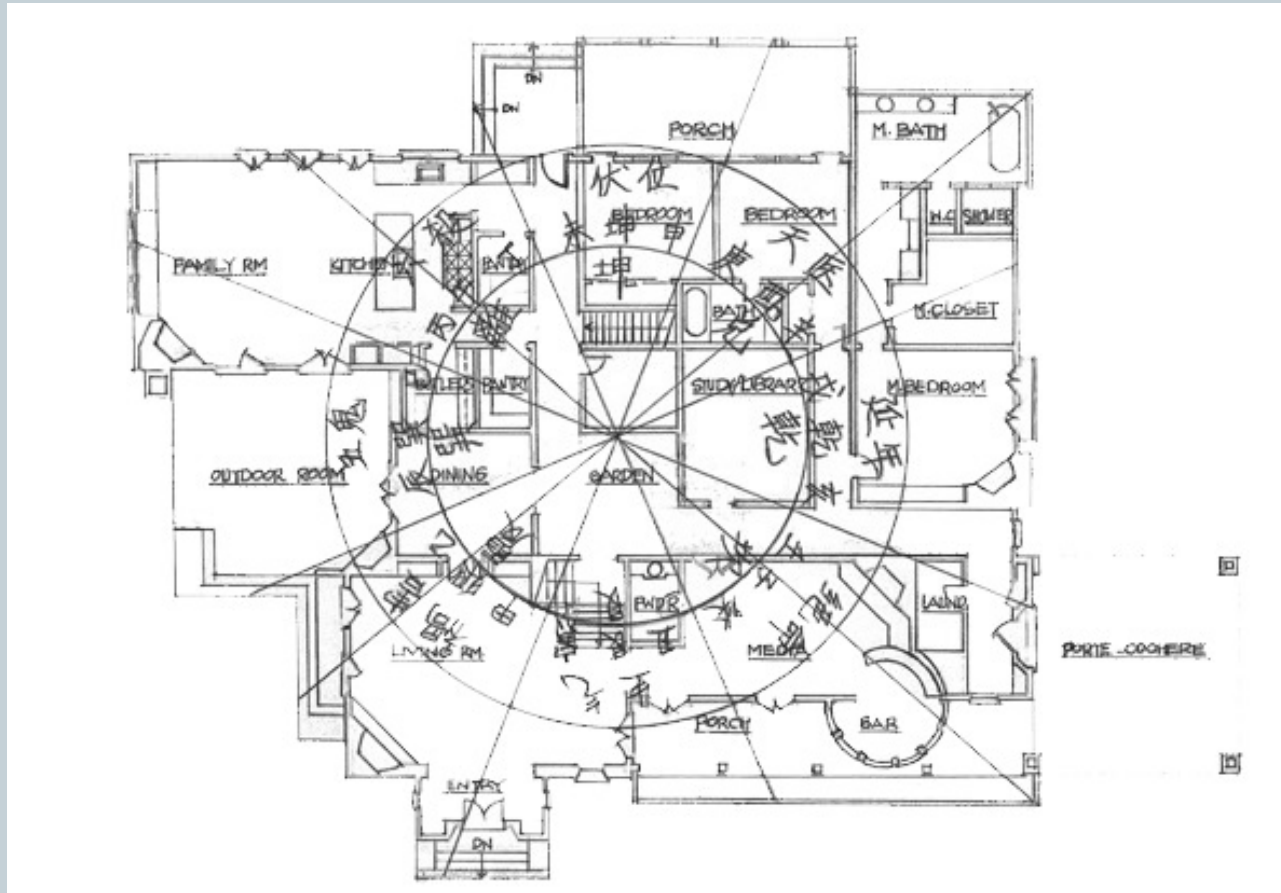
North	Northeast	East	Southeast
337° to 22°	22° to 67°	67° to 112°	112° to 157°
South	Southwest	West	Northwest
157° to 202°	202° to 247°	247° to 292°	292° to 337°

How to Divide Up A Floor Plan



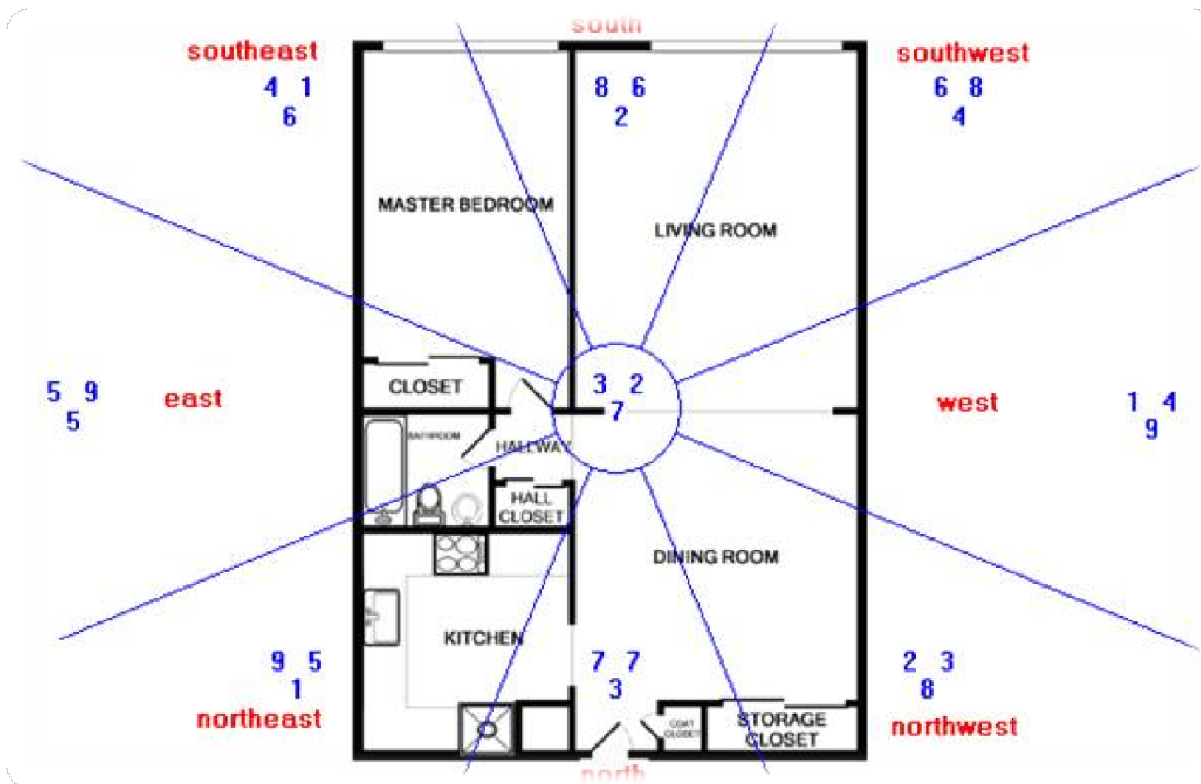
Module 4: Pie-Shape vs. 9-Square Grid

10



Module 4: Pie-Shape vs. 9-Square Grid

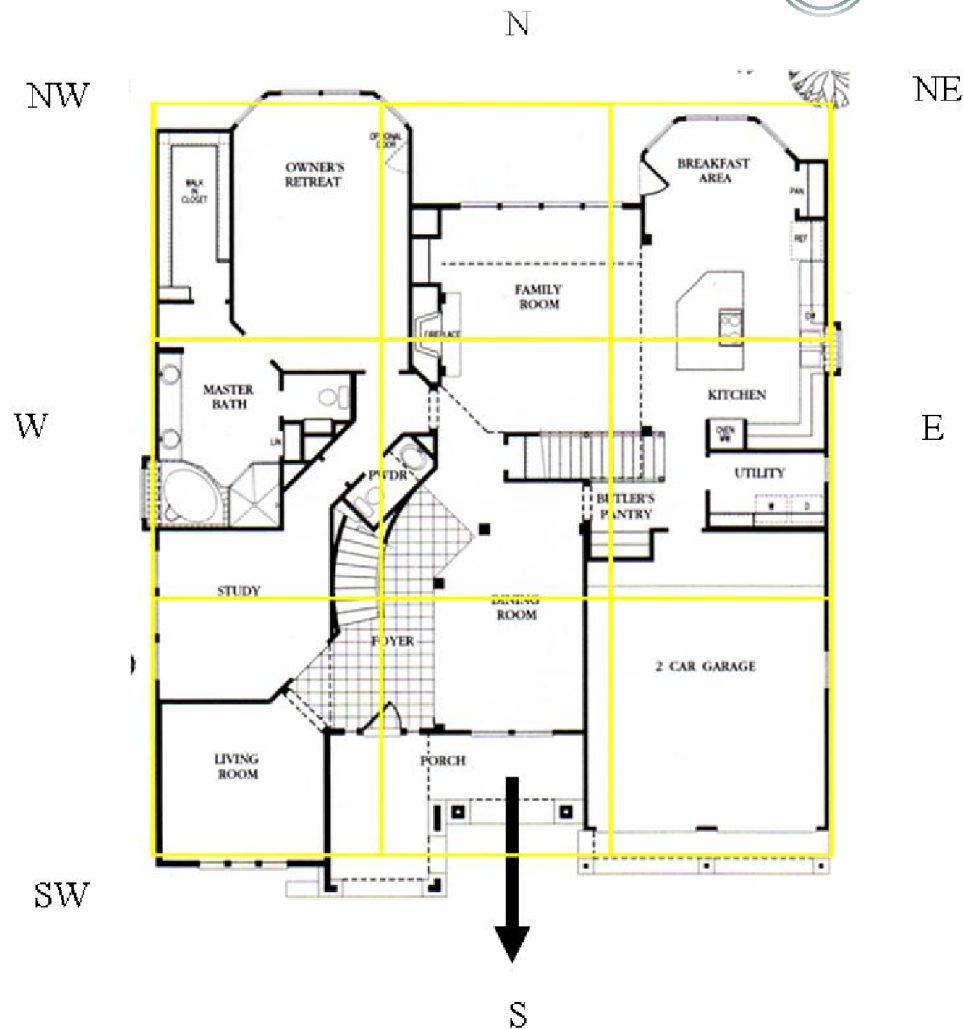
11



The pie-shape method makes it difficult to assign one direction to rooms, this method is very popular with the Hong Kong Masters

Module 4: Nine Square Grid Method

12



It's easy to see the floor plan of homes/structures are square/rectangular, and the 9 square grid mimics the Lo Shu Palaces

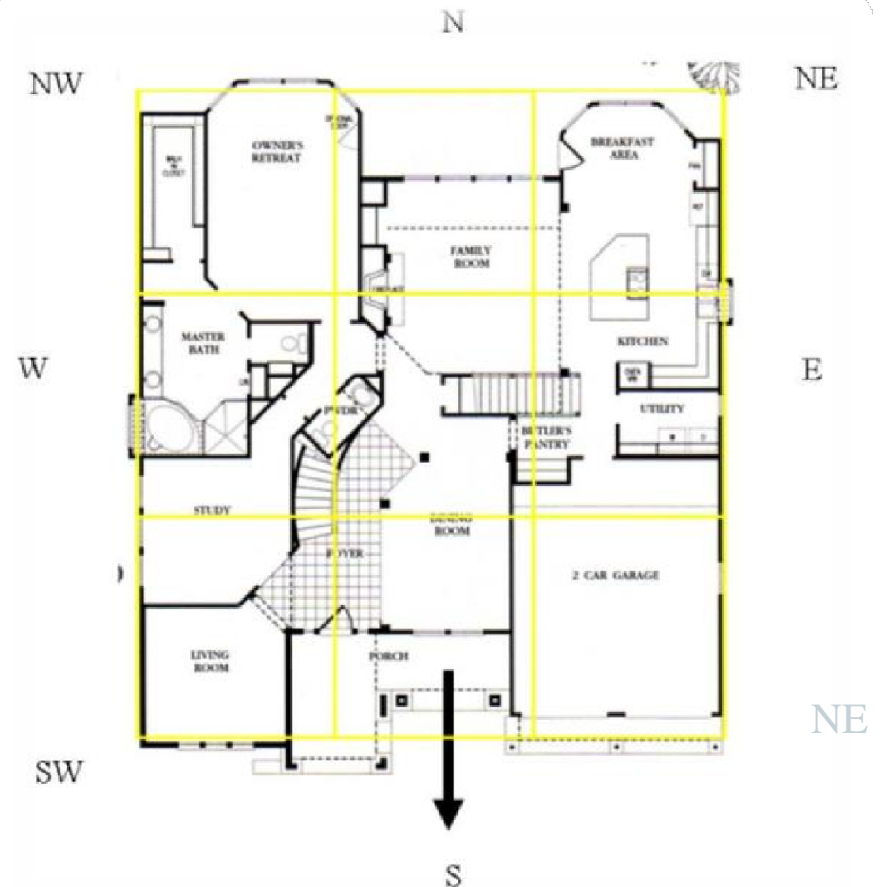
Module 4: South-Facing House Example

13

NW	N	NE
W		E
SW	S	SE

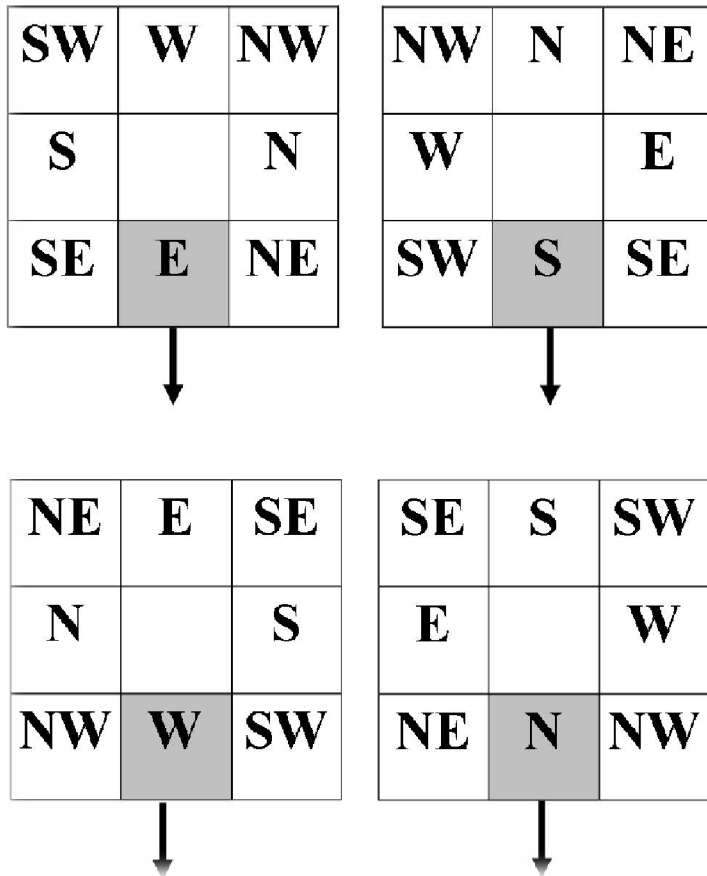


The nine sectors should look like this



Cardinal Directions (N, S, E,W)

14



Place this chart in a plastic sleeve as you will use them many times. Once you have the correct facing direction, this chart will show you where the sectors should be located

Intercardinal Directions (SW,NW,NE,SE)

15

W	NW	N
SW		NE
S	SE	E



N	NE	E
NW		SE
W	SW	S



E	SE	S
NE		SW
N	NW	W



S	SW	W
SE		NW
E	NE	N

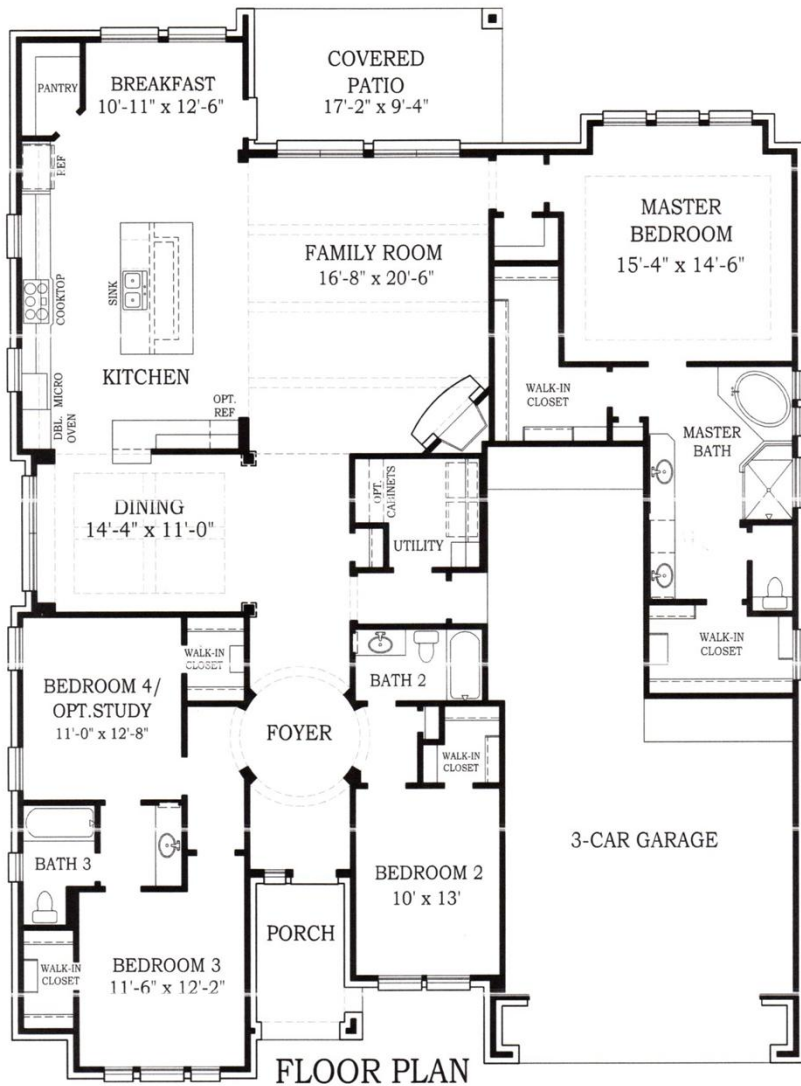


Place this chart in a plastic sleeve as you will use them many times. Once you have the correct facing direction, this chart will show you where the sectors should be located

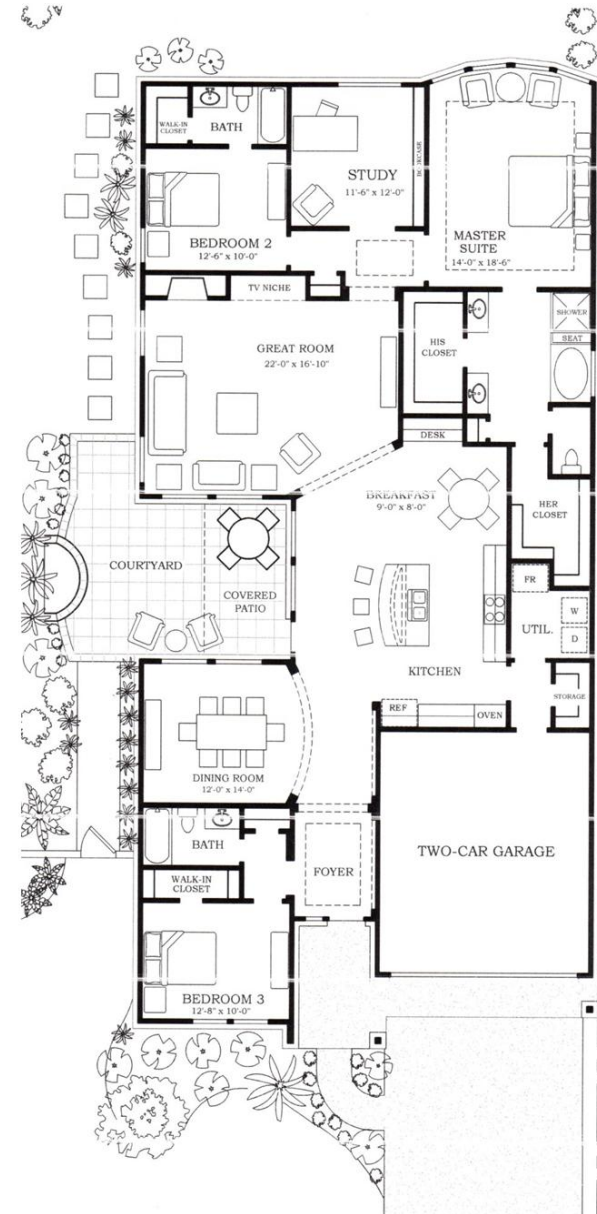
Practice Dividing Up Floor Plans



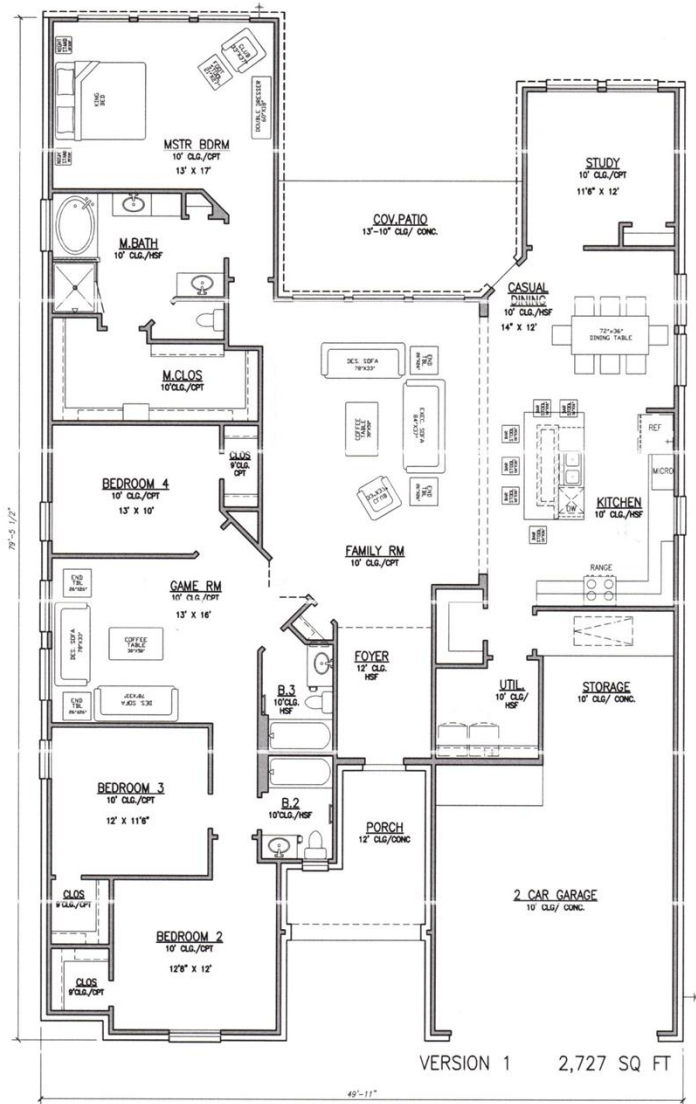
Floor Plan # 1



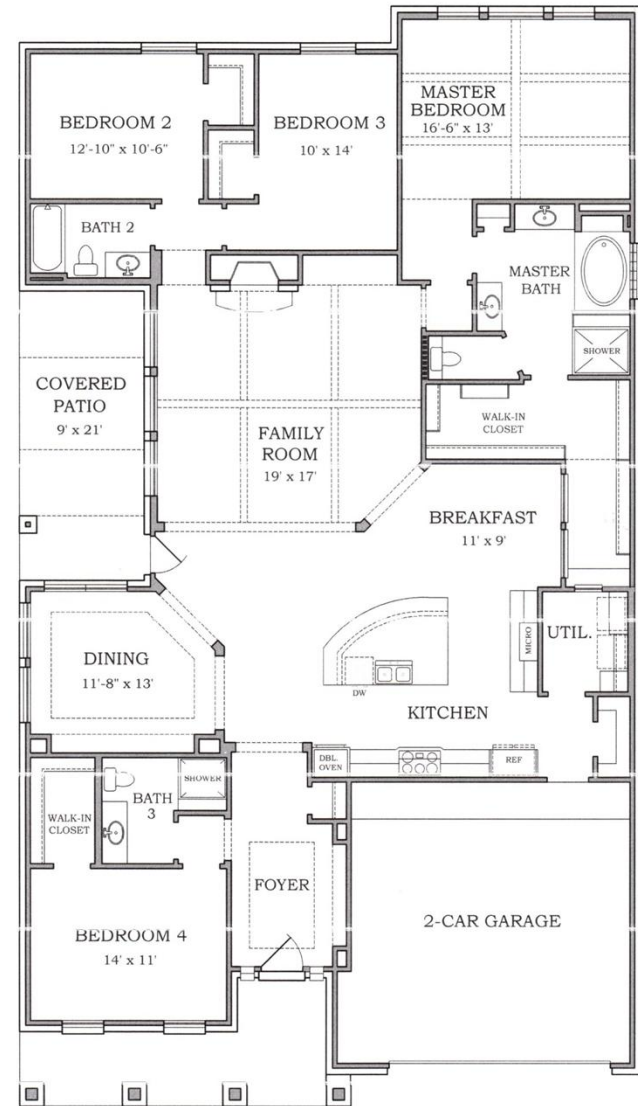
Floor Plan # 2



Floor Plan # 3



Floor Plan # 4



THE END
Module Four of
Feng Shui That Rocks the House



This document was created with the Win2PDF “print to PDF” printer available at <http://www.win2pdf.com>

This version of Win2PDF 10 is for evaluation and non-commercial use only.

This page will not be added after purchasing Win2PDF.

<http://www.win2pdf.com/purchase/>